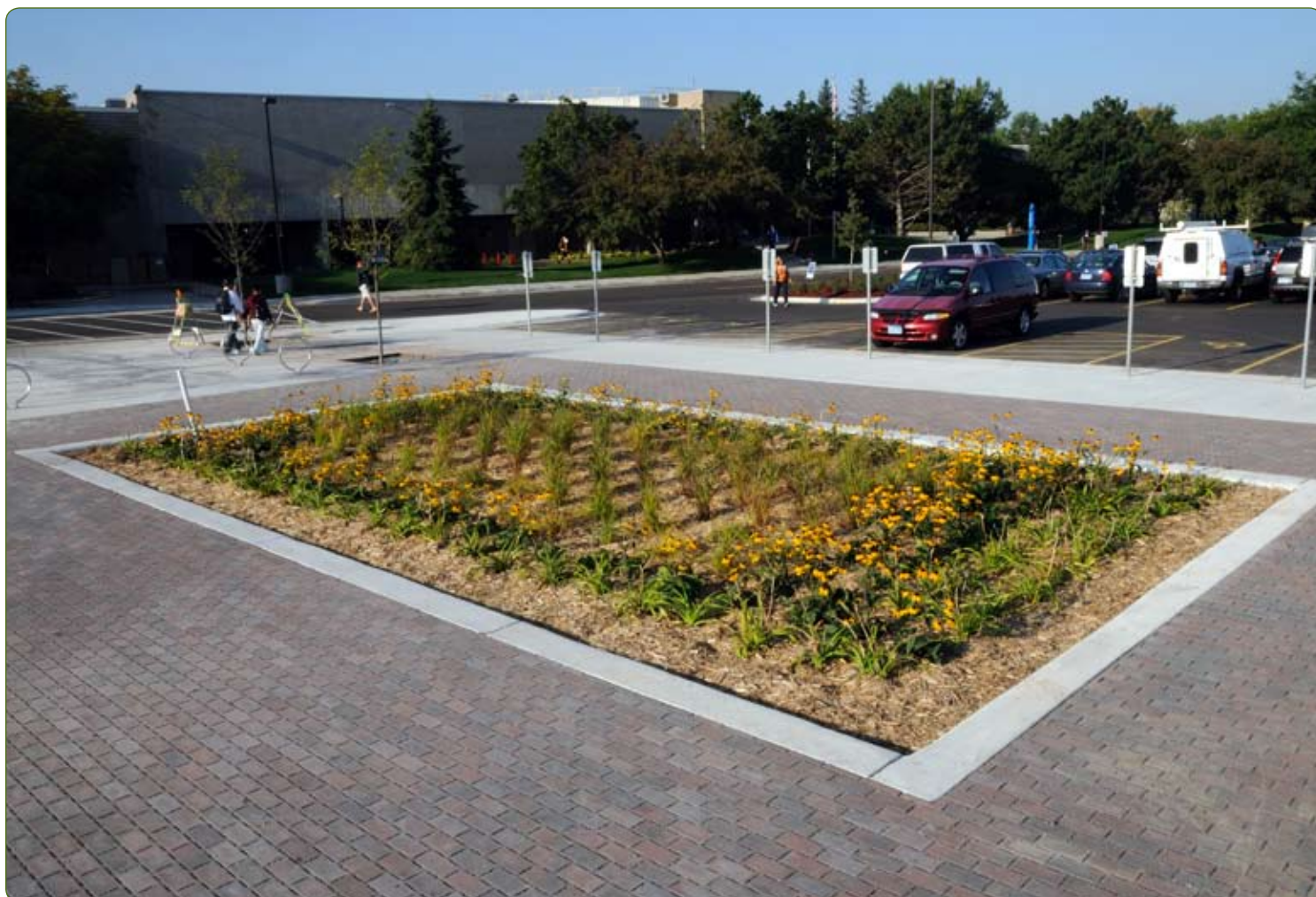




## FINANCIAL ASSISTANCE AVAILABLE FOR WILLOW CREEK PERMEABLE PAVERS



### IT PAYS TO BE GREEN!

#### *Minnesota Watershed Districts Offer Grants and Loans for Permeable Pavers*

Did you know your home, business or municipality may be eligible for a cost-sharing grant to help pay for installing Willow Creek Permeable Pavers? Many watershed districts in the Minneapolis-St. Paul metropolitan area now offer financial assistance—grants and loans—to property owners for projects that meet certain qualifications for improving water quality, including the use of permeable pavers. Additional watershed districts throughout Minnesota are in the process of establishing similar programs.

Below is a list of resources that currently offer financial assistance for permeable pavers. Contact your appropriate agency to find out if you qualify. Green up your pavement—and your pocketbook!

#### STATEWIDE

Minnesota Association of Watershed Districts  
(651) 453-8506  
<http://mnwatershed.govoffice.com>

#### TWIN CITIES METRO AREA

Rice Creek Watershed District  
(736) 398-3070  
Portions of the North Metro area in Ramsey,  
Anoka and Washington counties.  
<http://www.ricecreek.org/grants>  
<http://www.ricecreek.org/bmp/pp>

TWIN CITIES METRO AREA (continued)

Middle St. Croix Watershed Management Organization  
(651) 275-1136  
Watershed district includes portions of White Bear Lake, Little Canada, North St. Paul, St. Paul, Maplewood, Oakdale, Landfall and Woodbury in the East Metro area.  
[http://www.mscwmo.org/programs\\_cost\\_share.htm](http://www.mscwmo.org/programs_cost_share.htm)

Brown's Creek Watershed District  
(651) 275-1136  
Watershed district includes portions of Hugo, Stillwater Township, Grant, Stillwater, Oak Park Heights and Lake Elmo in Washington County.  
<http://www.bcwd.org/grants.html>

Washington Conservation District  
Administers programs for Middle St. Croix Watershed Management Organization and Carnelian Marine Watershed District.  
(651) 275-1136  
[http://www.mnwcd.org/financial\\_assistance.php](http://www.mnwcd.org/financial_assistance.php)

Ramsey-Washington Metro Watershed District  
Administers programs for Beaver Lake, Phalen, Battle Creek, County Ditch 18, St. Paul Beltline, Blufflands and Fish Creek watershed districts.  
(651) 704-2089  
[http://www.rwmwd.org/index.asp?Type=B\\_BASIC&SEC={E5745966-78DF-4558-8C39-431D6D450673}](http://www.rwmwd.org/index.asp?Type=B_BASIC&SEC={E5745966-78DF-4558-8C39-431D6D450673})

South Washington Watershed District  
Administers programs for Woodbury, Cottage Grove, St. Paul Park, Newport, Grey Cloud Island Township, and portions of Afton, Lake Elmo and Oakdale.  
(651) 714-3729  
<http://www.swwdmn.org/>

9 Mile Creek Watershed  
Portions of the cities of Bloomington, Eden Prairie, Edina, Hopkins, Minnetonka, and Richfield are located within the Nine Mile Creek watershed.  
(952) 835-2078  
<http://maps2.barr.com/nmcwd-district/>

Dakota County Soil and Water Conservation District  
(651) 480-7777  
[www.dakotaswcd.org](http://www.dakotaswcd.org)

Hennepin County Environmental Services  
The Natural Resources Incentives for Critical Habitat provides financial and technical assistance to landowners and municipalities for protecting of water quality.  
(612) 348-3777  
[www.hennepin.us](http://www.hennepin.us) (KEYWORD: NRICH)

Prior Lake-Spring Lake Watershed District  
Portions of Dakota County encompassing Upper Prior Lake, Lower Prior Lake and Spring Lake.  
(952) 447-4166  
[http://www.plslwd.org/reports\\_plslwd.htm](http://www.plslwd.org/reports_plslwd.htm)

Comfort Lake-Forest Lake Watershed District  
Northern Washington County and southern Chisago County, including the cities of Chisago City, Forest Lake, Scandia, and Wyoming.  
(651) 209-9753  
[http://www.clflwd.org/documents/BMPCost-shareFlyer\\_plusapplication.pdf](http://www.clflwd.org/documents/BMPCost-shareFlyer_plusapplication.pdf)

Coon Creek Watershed District  
Anoka County, including portions of the cities of Andover, Blaine, Columbus, Coon Rapids and Ham Lake.  
(763) 755-0975  
[www.cooncreekwd.org](http://www.cooncreekwd.org)

Sauk River Watershed District  
The portions of counties contained within by the watershed include southeastern Douglas County, northeastern Pope County, southwestern Todd County, northern Meeker County, and the center third of Stearns County.  
(320) 352-3221  
<http://www.srwdmn.org/incentive.html>

Additional contact information for Twin Cities metro area water-quality resources:

Metro Watershed Partners  
<http://www.cleanwatermn.org/tools/toolsDirectory.asp>

Blue Thumb  
For more information about metro-area funding opportunities.  
<http://www.bluethumb.org/grants>

